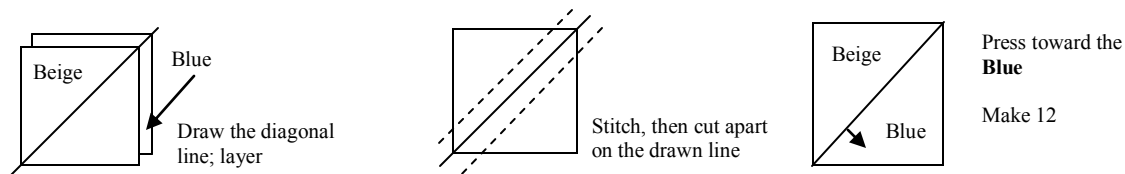


Constructing the blocks, cont:

The **B** units are made the same way as the **A** units using the **Blue** scrap 2 7/8-inch squares layered with a **Beige** scrap 2 7/8-inch squares. Draw a diagonal line across the back of the **Beige** scrap 2 7/8-inch squares, layer, stitch 1/4-inch to each side of the drawn line as before. Cut apart on the drawn line and press toward the **Blue** scrap. Each unit should measure 2 1/2-inches square. Make **12 Blue/Beige B** units.



Follow the diagram below to make the blocks:

