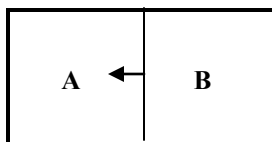
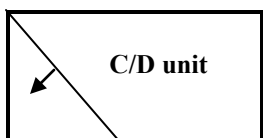
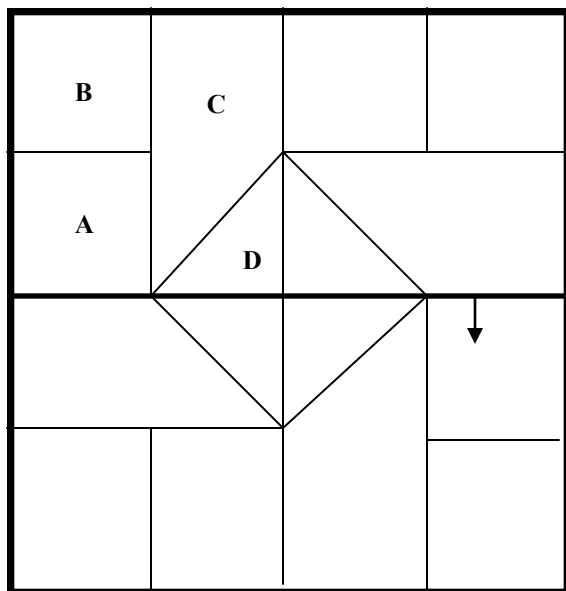
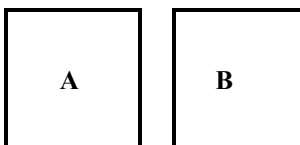
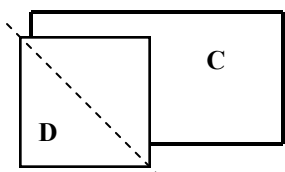


the Susannah
Block

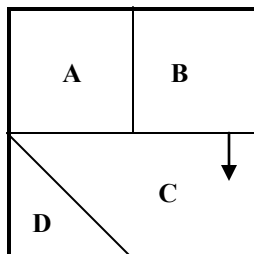
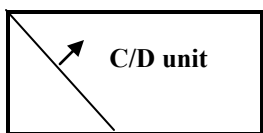
8-inch finished (8 1/2-inch unfinished) block



make 2

make 4

Make 16



make 2

make 4

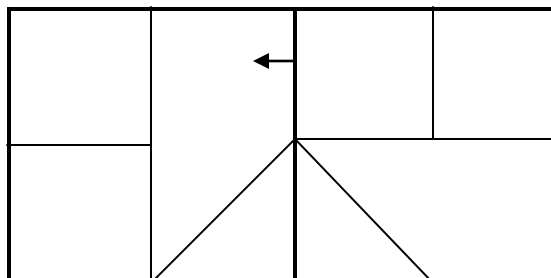
Cutting:

A (4) 2 1/2 x 2 1/2

B (4) 2 1/2 x 2 1/2

C (4) 2 1/2 x 4 1/2

D (4) 2 1/2 x 2 1/2



make 2

Erik's Tip

Re-press the block pieces in the direction that creates the least bulk, if you need to.